

ORDINANCE NO. 2019-09-62

AN ORDINANCE AMENDING SECTION 17.4.608 OF THE AMERICAN FORK CITY CODE RELATING TO THE TRANSIT ORIENTED DEVELOPMENT TABLE 4A OPERATIONAL OVERLAY AND PROVIDING AN EFFECTIVE DATE FOR THE ORDINANCE.

Whereas, American Fork City has adopted Section 17.4.608 titled Transit Oriented Development (TOD); and

Whereas, American Fork has included tables that need to be updated periodically.

NOW THEREFORE, be it ordained by the City Council of American Fork, Utah that:

1. Section 17.4.608 Table 4A be amended as shown in the attached Operational Overlay maps.

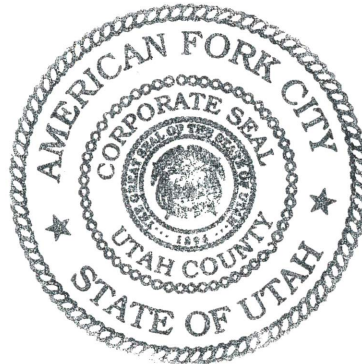
EFFECTIVE DATE. This ordinance shall take effect immediately upon its passage and publication as prescribed by law.

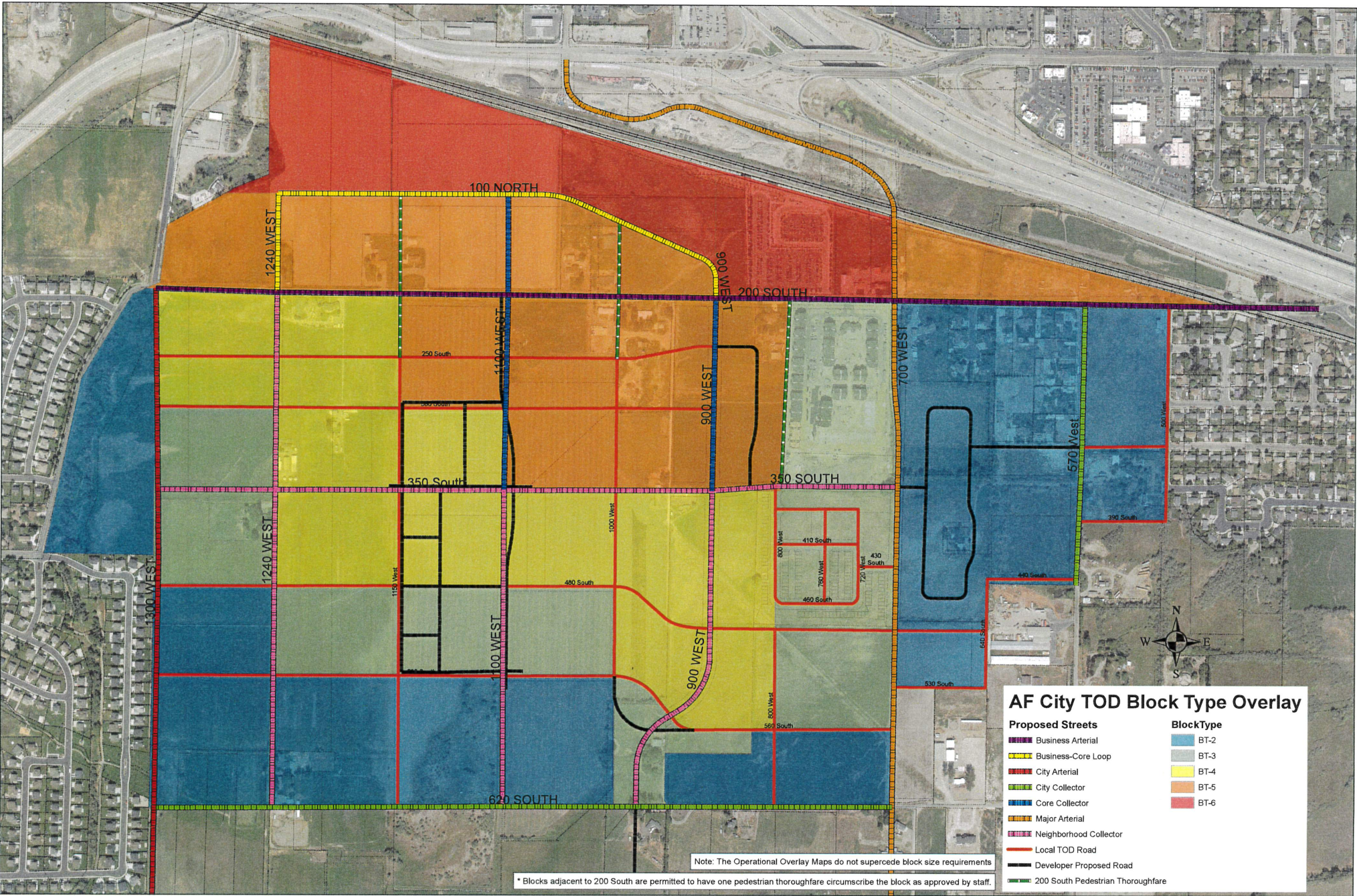
PASSED AND ADOPTED BY THE CITY COUNCIL OF AMERICAN FORK, STATE OF UTAH, ON THIS 24 DAY OF SEPTEMBER, 2019.


Bradley J. Frost, Mayor

ATTEST:


Lauralee Hill, Deputy Recorder



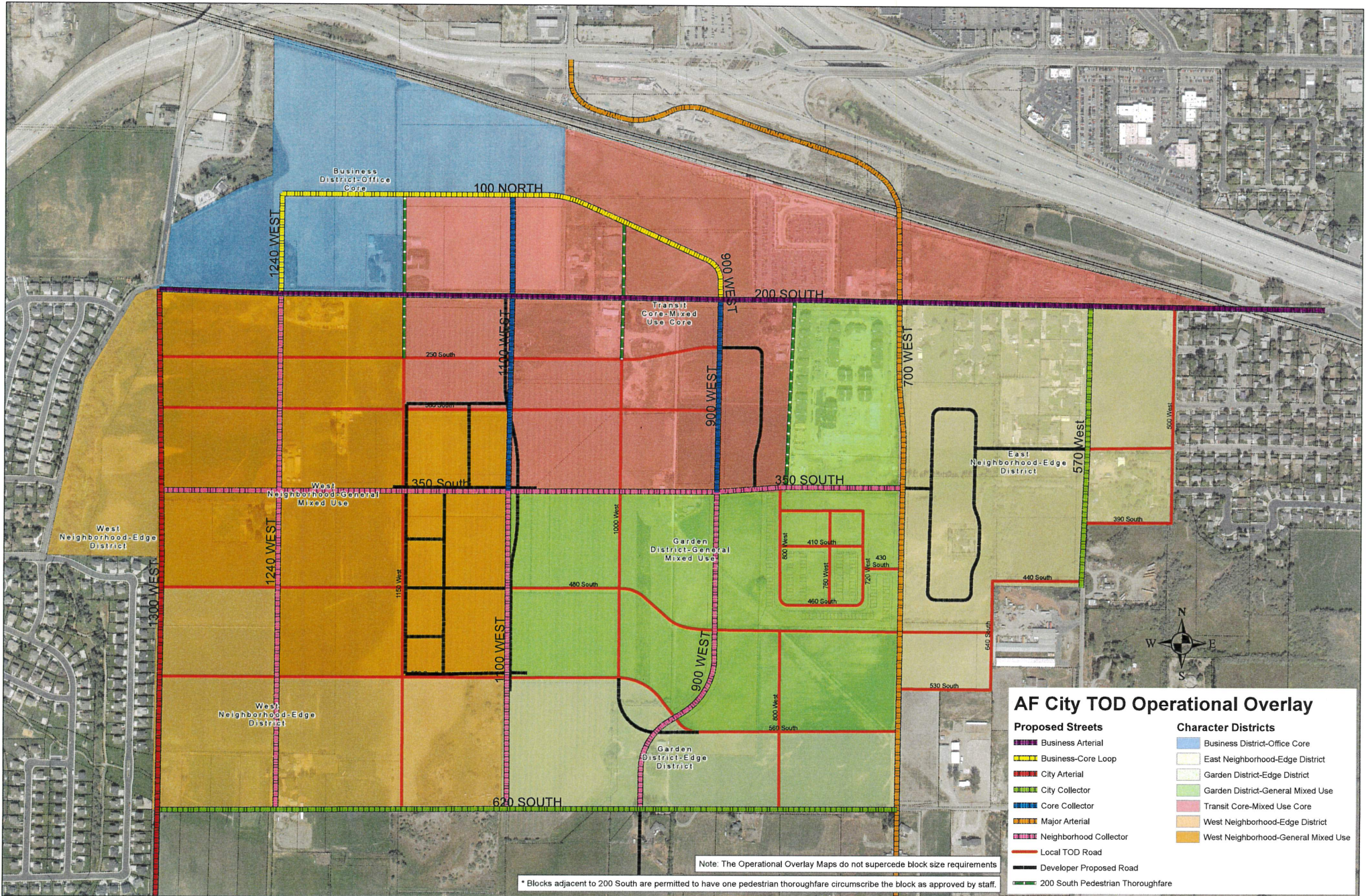


AF City TOD Block Type Overlay

Proposed Streets	BlockType
Business Arterial	BT-2
Business-Core Loop	BT-3
City Arterial	BT-4
City Collector	BT-5
Core Collector	BT-6
Major Arterial	
Neighborhood Collector	
Local TOD Road	
Developer Proposed Road	
200 South Pedestrian Thoroughfare	

Note: The Operational Overlay Maps do not supercede block size requirements

* Blocks adjacent to 200 South are permitted to have one pedestrian thoroughfare circumscribe the block as approved by staff.



AF City TOD Operational Overlay

- | Proposed Streets | Character Districts |
|-----------------------------------|-------------------------------------|
| Business Arterial | Business District-Office Core |
| Business-Core Loop | East Neighborhood-Edge District |
| City Arterial | Garden District-Edge District |
| City Collector | Garden District-General Mixed Use |
| Core Collector | Transit Core-Mixed Use Core |
| Major Arterial | West Neighborhood-Edge District |
| Neighborhood Collector | West Neighborhood-General Mixed Use |
| Local TOD Road | |
| Developer Proposed Road | |
| 200 South Pedestrian Thoroughfare | |

Note: The Operational Overlay Maps do not supersede block size requirements

* Blocks adjacent to 200 South are permitted to have one pedestrian thoroughfare circumscribe the block as approved by staff.